

Online SET system – Results from Spring 2013 and Comparisons

June 8, 2013

The five point scale and the online system for evaluating teaching was used by the entire university for the first time in Spring 2013. On the whole, the system worked very well, and we received numerous emails on how easy it was to use.

A few instructors faced issues with the courses not being setup for receiving e-mail links for their students. This was almost always because the course had not be setup correctly in Peoplesoft for primary and secondary instructors. OIRE will run a training program to discuss this issue with department AAs and the Registrar’s office.

Faculty who opted out and used paper bubble sheets have not yet been tabulated, because of a glitch in the scanning system. The following are the results of the Spring 2013 Online Student Evaluation of Teaching (Online SET).

Response Rate: The response rate was 53% (compared to 67% using the old paper based system)

	Freq	Resp Rate
Predominantly In Classroom	17%	69%
Predominantly Out of Class	83%	49%
	100%	53%

“Predominantly” has been defined as >67% of responses

Where done and device used: The following table shows where the evaluation of teaching was done by individual students (as opposed to the above table for the whole class), and which device was used.

In the classroom	19.3%
PC	1.6%
Laptop/ Tablet	13.8%
Smartphone	3.6%
Other	0.2%
Did not answer	0.1%
Outside of the classroom	80.4%
PC	12.0%
Laptop/ Tablet	62.2%
Smartphone	5.6%
Other	0.5%
Did not answer	0.1%
Did not answer	0.4%
PC	0.1%
Laptop/ Tablet	0.1%
Smartphone	0.0%
Other	0.0%
Did not answer	0.2%
Grand Total	100.0%

PC	13.7%
In the classroom	1.6%
Outside of the classroom	12.0%
Did not answer	0.1%
Laptop/ Tablet	76.0%
In the classroom	13.8%
Outside of the classroom	62.2%
Did not answer	0.1%
Smartphone	9.2%
In the classroom	3.6%
Outside of the classroom	5.6%
Did not answer	0.0%
Other	0.7%
In the classroom	0.2%
Outside of the classroom	0.5%
Did not answer	0.0%
Did not answer	0.4%
In the classroom	0.1%
Outside of the classroom	0.1%
Did not answer	0.2%
Grand Total	100.0%

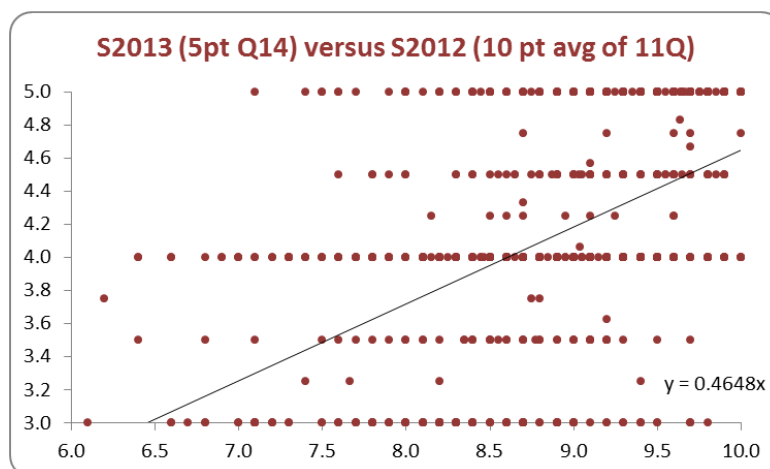
Many of the “Other” use Macs, apparently thinking the PC option is for non-Macs.

Comparison with the old 10 point scale (for Merit, etc., if needed):

Guidelines for interpreting SET scores for faculty, department heads and deans has been provided by the Faculty Standards Committee at http://www.oir.uconn.edu/FE_Univ_Senate_SET_Guidelines_Fa12.pdf

In a study of 1200 identical courses-instructor combinations from **Spring 2012** and **Spring 2013** taught by the same instructors in Spring 2012 and Spring 2013 (a total of 820 courses), we make the following observations.

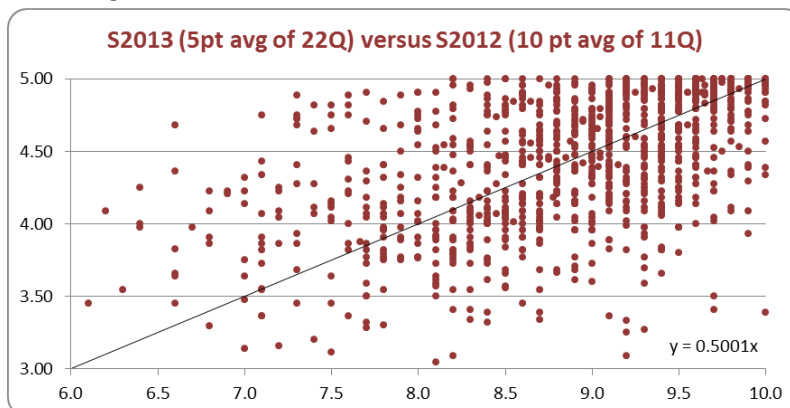
1. **Use of Q14 as summary rating would be incorrect** - Q14 (Overall rating of the instructor) is a question, **not** the average of the previous 13 questions.
 - a. The reported value is a median, and therefore is usually an integer (rarely ends in 0.5). Therefore it does not have the diversity of values seen in the old average of 11 questions in the old 10 point scale See graph below.



- b. Our regression between Spring 2012 and Spring 2013 courses show that the 5-point scale is 46.8% of the old 10-point scale, not 50%, if only Q14 is used.

2. It may be preferable to use the average of Q1 through Q22 for merit, if a comparative metric to the old 10-point scale is needed

- a. This average has the diversity of values seen in the old average of 11 questions in the 10 point scale. See figure below.



- b. Our regression between Spring 2012 and Spring 2013 courses show that the 5-point scale is exactly 50% of the old 10-point scale.
- c. The evaluations received in Spring 2012 and Spring 2013 for identical course-instructor combinations is shown below if the overall average of 22 questions is used. For example, 56% of all faculty received the almost exact predicted score in the 5 point scale (green shaded cells), 20% received higher scores (above the diagonal green cells), and 24% received lower scores (below the diagonal). This assumes that each instructor-course combination maintained the same teaching quality in both semesters.

S2012 - Avg of 11 items	2.5-3	3-3.5	3.5-4	4-4.5	4.5-5	Grand Total
5-6						1%
6-7	1%		1%	1%		2%
7-8	1%	1%	3%	4%	2%	10%
8-9		1%	6%	13%	12%	32%
9-10		1%	2%	11%	40%	55%
Grand Total	2%	3%	13%	29%	54%	100%

Key to reading table (say row 8-9):
 13% of all faculty receive the expected half of old score (4-4.5)
 12% receive higher evaluations in the new scale
 7% receive lower evaluations in the new scale

- d. The average of 22 questions is **not currently reported** in the faculty and department online reports. **We will work to make this available.**

UConn | Office of Institutional Research and Effectiveness

For questions and further information, please contact Suresh Nair, Interim Associate Provost for Institutional Effectiveness and Professor, Operations and Information Management, School of Business
suresh.nair@business.uconn.edu

Phone: (860) 486-1727